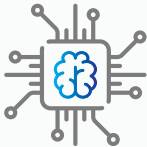


Earth-4222



Wi-Fi with high speeds

1200 Mbps Dualband



Powered by advanced technology

Aprecomm A.I. Engine



Main Highlights :

4x GE Ports | 2x VoIP ports

Product Description

Earth 4222 is the most compact Home Gateway Wi-Fi supporting Triple-play services. Format and design is built to fit the market demands in most optimal way, and provides High quality services, supporting WiFi, High bandwidth Gigabit Data, Quality voice service, Cable TV and IPTV services. Earth 4222 is the world's first A.I. based ONT which perfectly suits for the best FTTH infrastructure and is recommended for the most smart use of the network.

Aprecomm VWE

(Virtual Wireless Expert) Highlights

Visibility - VWE offers visibility to subscribers Wi-Fi experience. Get to know Wi-Fi issues even before the customer reports.

Reduced Downtime & Automation - 90% reduction in Downtimes due to Wi-Fi Issues.

Natural Language Processing (NLP) Search Engine - Programmed to understand, process, and generate results based on human language. Operators ask questions freely and get the results they're looking for.

Reduced OpEx - 70% reduced operation cost and reliable service, no special expertise required to operate and maintain your Wi-Fi Networks.

Cloud managed Wi-Fi – Microservice architecture with scalable and reliable solution on the cloud platform.

WORLD'S FIRST AI BASED ONT

